

# High-Quality Innovative

Climate & Air Appliances Catalog



# Welcome!



## FACTORY STRENGTH



Founded in September 2002, our company has dedicated two decades to specializing in the seasonal appliance industry. We integrate mold development for sheet metal parts, product R&D, manufacturing, processing, and sales into a comprehensive operation. With a production area of 17,000 square meters and a workforce of over 200 employees, We are a distinguished supplier to renowned domestic clients such as Airmate, Bear, Haier, and Westinghouse. Our products hold multiple domestic and international certifications, Management System. At Baopeng, we believe survival depends on quality and growth springs from innovation. Upholding quality as our absolute red line, we are committed to providing customers with safe and satisfactory products.

PAGE 1



# Table of content

**1.**

ABOUT US

**2.**

TABLE OF CONTENT

**3.**

FAN

**9.**

AIR COOLER FAN

**13.**

HEATER

# FAN

## Effortless Comfort, Elegant Design



3 speed settings: H/M/L  
Timer: 15 hours  
horizontal oscillation

Detachable steel tube column

**16-inch remote control floor/ deskfan**  
Model: FS-40R  
Motor/Power: 220V/50Hz/65W  
Product size: 410\*410\*1390mm  
Package size: 650\*220\*500mm  
Net Weight: 6kg  
Gross Weight: 7kg

PAGE 3



**14-inch dual-purpose deck and floor remote-control fan**  
Model: FT-40A  
Motor/Power: 220V/50Hz  
Product size: 410\*410\*1390mm  
Package size: 650\*220\*500mm  
Net Weight: 5.6kg  
Gross Weight: 6.7kg



**14-inch mechanical floor-standing fan**  
Model: FT-35B  
Motor/Power: 220V/50W  
Product size: 410\*370\*1050mm  
Package size: 620\*180\*430mm  
Net Weight: 3.6kg  
Gross Weight: 4.5kg



**14-inch mechanical floor-standing fan**  
Model: FT-35J  
Motor/Power: 220V/50W  
Product size: 410\*370\*1050mm  
Package size: 620\*180\*430mm  
Net Weight: 3.6kg  
Gross Weight: 4.5kg



**14-inch remote control floor-standing fan**  
Model: FT-35R  
Motor/Power: 220V/50W  
Product size: 410\*370\*1050mm  
Package size: 620\*180\*430mm  
Net Weight: 3.6kg  
Gross Weight: 4.5kg



**16-inch remote control floor fan**

**Model:** FS-40A  
**Motor/Power:** 220V/50Hz/65W  
**Product size:** 410\*410\*1390 mm  
**Package size:** 650\*220\*500mm  
**Net Weight:** 5.6kg  
**Gross Weight:** 6.7kg



**16-inch mechanical floor fan**

**Model:** FS-40B  
**Motor/Power:** 220V/50Hz/65W  
**Product size:** 410\*410\*1390mm  
**Package size:** 650\*220\*500mm  
**Net Weight:** 5.6kg  
**Gross Weight:** 6.7kg



**16-inch mechanical floor/desk fan**

**Model:** FS-40J  
**Motor/Power:** 220V/50Hz/65W  
**Product size:** 410\*410\*1390 mm  
**Package size:** 650\*220\*500mm  
**Net Weight:** 5.8kg  
**Gross Weight:** 6.8kg



**16-inch remote control floor fan**

**Model:** FS-617  
**Motor/Power:** 220V/50Hz/65W  
**Product size:** 410\*410\*1390mm  
**Package size:** 650\*220\*500mm  
**Net Weight:** 5.6kg  
**Gross Weight:** 6.7kg

---

# FAN

## POWERFUL CIRCULATING AIRFLOW

WHOLE ROOM COMFORT  
WIDE-ANGLE OSCALATION



**10-inch DC circulator fan**

Model: FD201R-D  
Motor/Power: DC24V/35W  
Product size: 310\*310\*980 mm  
Package size: 1100\*325\*345mm  
Net Weight: 3.5kg  
Gross Weight: 4.6kg

PAGE 5



**10-inch DC circulator fan**

Model: FD201R-D white  
Motor/Power: DC24V/35W  
Product size: 310\*310\*980 mm  
Package size: 1100\*325\*345mm  
Net Weight: 3.5kg  
Gross Weight: 4.6kg



**10-inch DC circulator fan**

Model: FD201R-E  
Motor/Power: DC24V/35W  
Product size: 310\*310\*850mm  
Package size: 675\*330\*340mm  
Net Weight: 3.8kg  
Gross Weight: 4.8kg



**10-inch DC circulator fan**

Model: FD201R-F  
Motor/Power: DC24V/35W  
Product size: 310\*310\*850mm  
Package size: 675\*330\*340mm  
Net Weight: 3.9kg  
Gross Weight: 4.8kg



**10-inch DC circulator fan**

Model: FD201R-L  
Motor/Power: DC24V/35W  
Product size: 310\*310\*850mm  
Package size: 675\*330\*340mm  
Net Weight: 3.8kg  
Gross Weight: 4.8kg



**10-inch DC circulator fan**

Model: FD201R-S  
Motor/Power: DC24V/35W  
Product size: 310\*310\*850mm  
Package size: 675\*330\*340mm  
Net Weight: 3.8kg  
Gross Weight: 4.8kg



**14-inch DC circulator fan**

Model: FZ302R  
Motor/Power: DC24V/35W  
Product size: 350\*350\*910mm  
Package size: 960\*325\*335mm  
Net Weight: 2.9kg  
Gross Weight: 3.8kg

---



**AC desk circulator fan**

Model: XH121E  
Motor/Power: 220v/50W  
Product size: 310\*310\*370 mm  
Package size: 350\*350\*410mm  
Net Weight: 2.95kg  
Gross Weight: 4.1kg



**AC desk circulator fan**

Model: XH121F  
Motor/Power: 220v/50W  
Product size: 310\*310\*370 mm  
Package size: 350\*350\*410mm  
Net Weight: 3.25kg  
Gross Weight: 4.4kg

---



**8-inch AC circulator fan  
mechanical control**

Model: XH1804J  
Motor/Power: 220V/50W  
Product size: 320\*190\*340 mm  
Package size: 330\*200\*355mm  
Net Weight: 1.9kg  
Gross Weight: 2.7kg



**Ceiling-mounted fan**

Model: FD040B  
Motor/Power: 220V/50W  
Product size: 445\*445\*360mm  
Package size: 470\*380\*470mm  
Net Weight: 2.9kg  
Gross Weight: 3.6kg

---

# Powerful Air Circulation



MANUAL TILT



AUTO SWING

Experience Rapid Cooling & Fresh Air

**6-inch AC table and wall dual-purpose mechanical circulating fan**

**Model: AM-3**

**Motor/Power: 220V/ 50W**

**Product size: 250\*200\*310mm**

**Package size: 285\*225\*365mm**

**Net Weight: 1.2kg**

**Gross Weight: 1.5kg**

PAGE 7



**6-inch desktop AC wall-mounted dual-purpose mechanical circulation fan**

**Model: FT-20C**

**Motor/Power: 220V/35W**

**Product size: 183\*121\*200mm**

**Package size: 203\*150\*225mm**

**Net Weight: 1kg**

**Gross Weight: 1.3kg**



**6-inch USB wall-mounted charging circulating fan**

**Model: FT-20C**

**Motor/Power: DC5V/5W**

**Product size: 185\*150\*230mm**

**Package size: 195\*195\*195mm**

**Net Weight: 0.7kg**

**Gross Weight: 0.8kg**



**8-inch table/floor fan**

Model: AM-2  
Product size: 225\*145\*260mm  
Package size: 230\*150\*265mm  
Net Weight: 0.6kg  
Gross Weight: 0.7kg



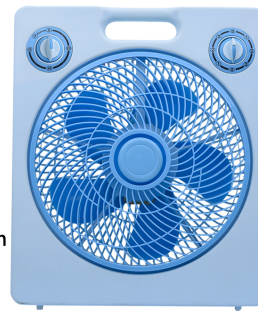
**8-inch AC mechanical circulating fan**

Model: FT-20B  
Motor/Power: 220V/50W  
Product size: 290\*190\*340mm  
Package size: 320\*220\*360mm  
Net Weight: 1.9kg  
Gross Weight: 2.5kg



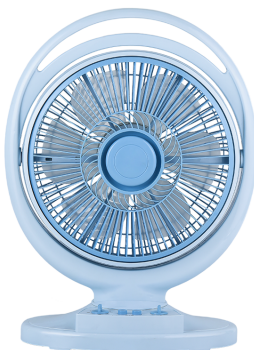
**10-inch mechanical desktop fan**

Model: FT-30E  
Motor/Power: 220V/50W  
Product size: 350\*250\*520mm  
Package size: 430\*250\*350mm  
Net Weight: 2.4kg  
Gross Weight: 2.96kg



**10-inch mechanical desktop fan**

Model: KYT-25B  
Motor/Power: 220V/ 50W  
Product size: 320\*130\*380mm  
Package size: 340\*190\*410mm  
Net Weight: 1.4kg  
Gross Weight: 2kg



**14-inch rotary electric fan**

Model: KYT-30B  
Motor/Power: 220V/50W  
Product size: 415\*200\*570mm  
Package size: 440\*220\*590mm  
Net Weight: 2.8kg  
Gross Weight: 3.4kg



**16-inch rotary electric fan**

Model: KYT-40B  
Motor/Power: 220V/50W  
Product size: 520\*360\*600mm  
Package size: 540\*380\*620mm  
Net Weight: 3.1kg  
Gross Weight: 3.9kg

## AIR COOLER FAN MECHANICAL

# Efficient Ice-Cold Cooling

15L Large Water Tank for Long-Lasting Comfort

Negative Ion Air Purification

Create Your Ideal Cool, Humid, & Clean Home Environment



### DC inverter cooling fan

Model: FL-926-3

Product size: 410\*410\*1230mm

Package size: 450\*450\*1260mm

Net Weight: 11kg

Gross Weight: 13.5kg

PAGE 9



### DC inverter cooling fan

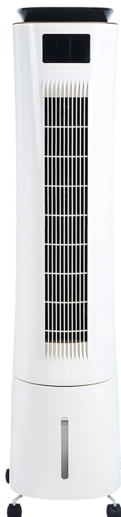
Model: FL-926-3 black

Product size: 410\*410\*1230mm

Package size: 450\*450\*1260mm

Net Weight: 11kg

Gross Weight: 13.5kg



### Air cooler fan remote control

Model: FTS-01A

Motor/Frequency: 220V/50Hz

Product size: 300\*240\*1120mm

Package size: 350\*280\*1150mm

Net Weight: 8kg

Gross Weight: 9.9kg



### Remote-controlled upper and lower dual cooling fan

Model: FL-926

Motor/Frequency: 220V/50Hz

Product size: 410\*410\*1230mm

Package size: 450\*450\*1260mm

Net Weight: 14.8kg

Gross Weight: 16kg



**Air cooler fan mechanical**

Model: FL-920  
Motor/Frequency: 220V/50Hz  
Product size: 375\*300\*785mm  
Package size: 405\*330\*815mm  
Net Weight: 6.4kg  
Gross Weight: 8.2kg



**Air cooler fan remote control**

Model: FL-918  
Motor/Frequency: 220V/50Hz  
Product size: 430\*380\*1107mm  
Package size: 460\*400\*1137mm  
Net Weight: 11kg  
Gross Weight: 13.5kg



**Air cooler fan remote control**

Model: FL-916  
Motor/Frequency: 220V/50Hz  
Product size: 400\*350\*920mm  
Package size: 430\*380\*960mm  
Net Weight: 9.9kg  
Gross Weight: 11.9kg



**Air cooler fan remote control**

Model: FL-929  
Motor/Frequency: 220V/50Hz  
Product size: 400\*350\*920mm  
Package size: 430\*380\*960mm  
Net Weight: 10kg  
Gross Weight: 11.8kg

PAGE10



**Air cooler fan remote control**

Model: FL-928  
Motor/Frequency: 220V/50Hz  
Product size: 390\*335\*770mm  
Package size: 420\*360\*820mm  
Net Weight: 7.2kg  
Gross Weight: 8.5kg



**Air cooler fan mechanical**

Model: FL-910  
Motor/Frequency: 220V/50Hz  
Product size: 320\*295\*655mm  
Package size: 340\*320\*680mm  
Net Weight: 5.5kg  
Gross Weight: 7kg

# AIR COOLER FAN

## Breathe Purer, Live Fresher

### Advanced Air Purification

Built-in Negative  
Ion Generator

Concentration  
≥ 5 Million Ions/cm<sup>3</sup>

Purification Efficiency  
Up to 92%



AeroChill

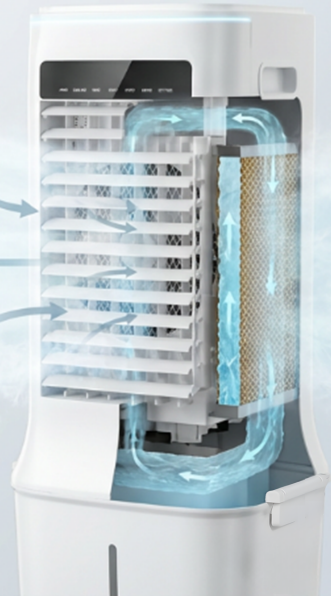
## Experience Superior Cooling

### Revolutionary 3D Stereo Cooling

Three-Sided Air  
Intake Design

Heat Exchange Area  
Increased by 2.8X

Efficient Honeycomb  
Water Circulation System



PAGE 11



Model: ZLF-925-1

Power: 35W

Product size: 460\*350\*1070mm

Package size: 490\*390\*800mm

Net Weight: 9.5kg

Gross Weight: 11.6kg



Model: ZLF-925-2: Can be used for both indoor and outdoor  
21,700mAh battery. USB-chargeable  
Equipped with solar panels

DC inverter cooling fan (regular) Model: ZLF-925-3: With mosquito repellent lamp  
21,700mAh battery. USB-chargeable.  
for outdoor use. Equipped with solar panels

Model: ZLF-925-4: With night light  
Anion purification

Model: ZLF-925-5: Remote control

Model: ZLF-925-6: Mechanical



**Air cooler fan**

Model: FL-905  
Motor/Frequency: 220V/50Hz  
Product size: 620\*430\*950 mm  
Package size: 650\*460\*980mm  
Net Weight: 14.8kg  
Gross Weight: 17kg



**Air cooler fan**

Model: FL-150B-A  
Motor/Frequency: 220V/50Hz  
Product size: 660\*450\*1220mm  
Package size: 680\*470\*1260mm  
Net Weight: 16kg  
Gross Weight: 18kg



**Air cooler fan-remote control  
(high power)**

Model: FL-922  
Motor/Frequency: 220V/50Hz  
Product size: 620\*410\*1120mm  
Package size: 650\*450\*1160mm  
Net Weight: 17.3kg  
Gross Weight: 19.5kg



**Air cooler fan-remote control  
(high power)**

Model: FL-935  
Motor/Frequency: 220V/50Hz  
Product size: 660\*450\*1220mm  
Package size: 680\*470\*1260mm  
Net Weight: 16kg  
Gross Weight: 18kg

## Cozy Comfort, Elegant Design

Realistic 3D Flame Effect Instant  
Warmth for Any Room  
Stylish Retro Aesthetic  
Portable & Convenient



Portable & Versatile.  
Carry Anywhere Comfort

Tabletop Heater.  
Cozy Night Companion

PAGE 13



### 3D flame fireplace heater

Model: AIR-R9  
Power: 1500W/800W  
Product size: 325\*135\*320mm  
Package size: 370\*195\*445mm  
Net Weight: 2.7kg  
Gross Weight: 3.35kg

### 3D flame fireplace heater

Model: AIR-R9-2 white  
Power: 1500W/800W  
Product size: 325\*135\*320mm  
Package size: 370\*195\*445mm  
Net Weight: 2.7kg  
Gross Weight: 3.35kg



### 3D flame fireplace heater

Model: BL-23N2002  
Power: 1800W/800W  
Product size: 290\*145\*390mm  
Package size: 335\*195\*450mm  
Net Weight: 2.7kg  
Gross Weight: 3.35kg



### 3D flame graphene baseboard heater

Model: TJX-2201A  
Power: 2200W  
Product size: 1100\*156\*230mm  
Package size: 1180\*205\*285mm  
Net Weight: 5.5kg  
Gross Weight: 7.3kg



### Graphene Baseboard Heater

Model: TJX-2201C  
Power: 2200W  
Product size: 1350\*173\*244mm  
Package size: 1415\*222\*305mm  
Net Weight: 7.3kg  
Gross Weight: 11kg



### Graphene Baseboard Heater

Model: TJX-2201N  
Power: 2200W  
Product size: 1100\*156\*230mm  
Package size: 1142\*205\*285mm  
Net Weight: 5.5kg  
Gross Weight: 7.3kg



### Graphene Baseboard Heater

Model: TJX-220B  
Power: 2200W  
Product size: 1300\*206\*257mm (with foot)  
1300\*155\*186mm (without foot)  
Package size: 1445\*205\*260mm  
Net Weight: 7.2kg  
Gross Weight: 9kg

---

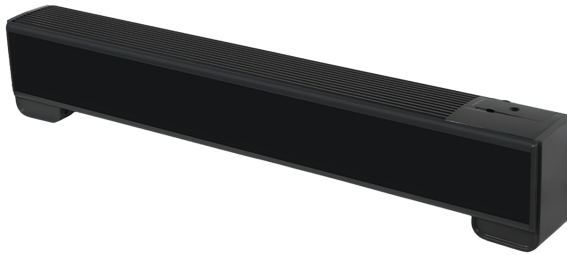
# HEATER

---



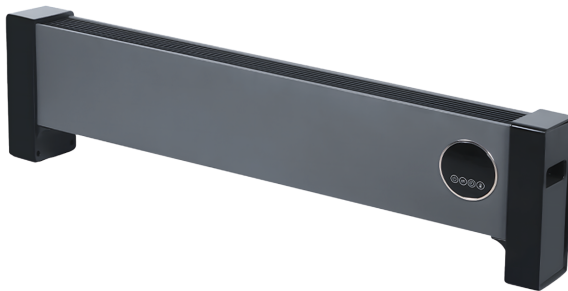
## Graphene Baseboard Heater

Model: TJX-2200H  
Power: 2200W  
Product size: 1400\*155\*250mm  
Package size: 1445\*155\*300mm  
Net Weight: 5.76kg  
Gross Weight: 8.15kg



## Graphene Baseboard Heater

Model: TJX-2201F  
Power: 2200W  
Product size: 1312\*155\*230mm  
Package size: 1375\*205\*280mm  
Net Weight: 7.3kg  
Gross Weight: 9.1kg



## Graphene Baseboard Heater

Model: TJX-2201G  
Power: 2200W  
Product size: 940\*122\*250mm  
Package size: 1005\*170\*305mm  
Net Weight: 4.6kg  
Gross Weight: 6.2kg

PAGE 15



## Graphene Baseboard Heater

Model: DNQ-P22E5  
Power: 2200W  
Product size: 950\*125\*1006mm  
Package size: 1115\*170\*315mm  
Net Weight: 4.6kg  
Gross Weight: 6.2kg



## Baseboard Heater-manual

Model: TJX-XX2022J  
Power: 2200W/1000W  
Product size: 875\*125\*255mm  
Package size: 920\*170\*305mm  
Net Weight: 4.25kg  
Gross Weight: 5.35kg

---



**Quartz tube heater**

Model: NST-813  
Power: 800W/400W  
Product size: 295\*180\*410mm  
Package size: 320\*210\*450mm  
Net Weight: 0.8kg  
Gross Weight: 1kg



**Quartz tube heater**

Model: NST-815  
Power: 800/400W  
Product size: 290\*145\*390mm  
Package size: 320\*170\*430mm  
Net Weight: 1.14kg  
Gross Weight: 1.64kg



**PTC heater mechanical**

Model: NST-150W  
Power: 1600/800W  
Product size: 295\*210\*400mm  
Package size: 305\*210\*400mm  
Net Weight: 2kg  
Gross Weight: 2.9kg



**PTC heater mechanical**

Model: NST-130W  
Power: 1300W/700W  
Product size: 190\*160\*270mm  
Package size: 192\*162\*290mm  
Net Weight: 1.35kg  
Gross Weight: 2.1kg



**PTC heater remote**

Model: HTC-2202R  
Power: 2000W/1000W  
Product size: 230\*260\*510mm  
Package size: 230\*270\*570mm  
Net Weight: 1.75kg  
Gross Weight: 2.5kg



**PTC heater mechanical**

Model: NST-218  
Power: 2000W/1000W  
Product size: 218\*218\*636mm  
Package size: 235\*235\*670mm  
Net Weight: 2.6kg  
Gross Weight: 3.3kg

# HEATER

---



**Far-infrared heater**

Model: NST-90S  
Power: 800W/400W  
Product size: 365\*365\*955mm  
Package size: 465\*350\*395mm  
Net Weight: 2.35kg  
Gross Weight: 3.35kg



**Far-infrared heater**

Model: NST-90W  
Power: 800W/400W  
Product size: 360\*440\*1070mm  
Package size: 520\*370\*420mm  
Net Weight: 2.75kg  
Gross Weight: 3.65kg



**Far-infrared heater**

Model: NST-120W  
Power: 900W/400W  
Product size: 410\*410\*1280mm  
Package size: 420\*400\*430mm  
Net Weight: 4.85kg  
Gross Weight: 6.15kg

PAGE 17



**Far-infrared heater**

Model: NST-108  
Power: 800W/400W  
Product size: 230\*230\*510mm  
Package size: 290\*290\*540mm  
Net Weight: 1.75kg  
Gross Weight: 2.5kg



**Heating wire heater**

Model: NST-150C  
Power: 1500W/800W  
Product size: 220\*110\*270mm  
Package size: 250\*113\*290mm  
Net Weight: 1kg  
Gross Weight: 1.7kg



## Adaptive Warmth, Anywhere You Need It

Floor-to-Desk Versatility  
Instant Setup, Effortless Adjustment



PAGE 18

### Customizable Comfort

Targeted Warmth for Legs & Feet.



### Versatile Heat for Full Body Coverage

Adaptable to Any Space.



**Website**

[www.nbbaopeng.com](http://www.nbbaopeng.com)

**Contact us**

No.118 Guyao Road, Zhangqi Town, Cixi City,  
Zhejiang Province, 315313, China  
[info@nbbaopeng.com](mailto:info@nbbaopeng.com)  
+86 15921162693